

# Fords.

SALES | LETTINGS | NEW HOMES



## Lumo Living, Flat 17 65-69 London Road, High Wycombe, HP11 1BN

**\*BRAND NEW DEVELOPMENT - PETS CONSIDERED!\***

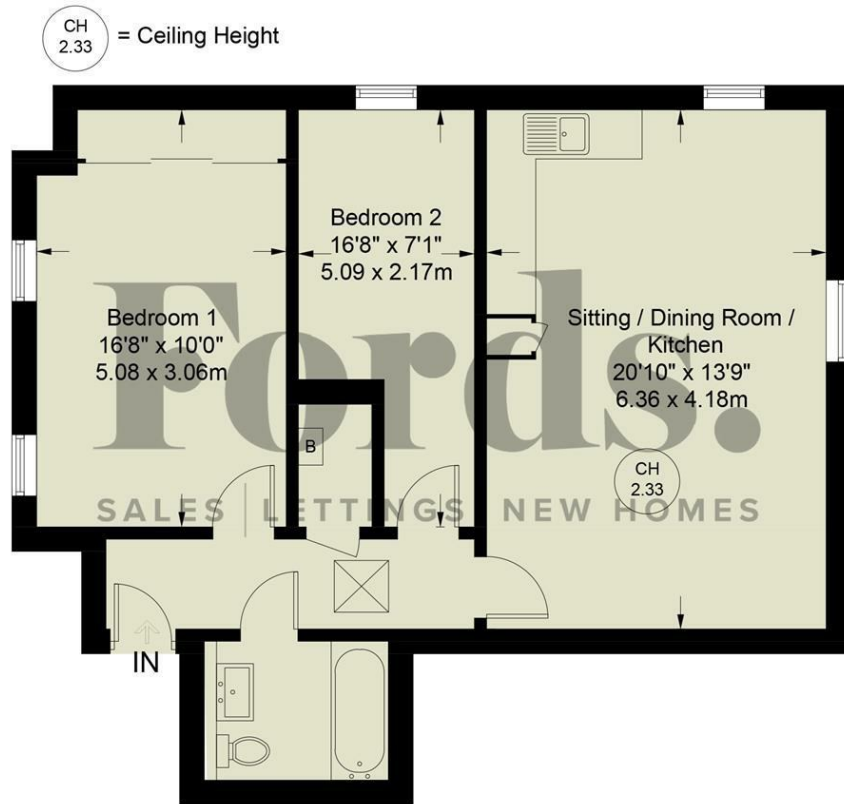
A two double bedroom apartment forming part of a luxury new build development of 23 apartments located just a stone's throw from the vibrant Town Centre of High Wycombe.

Each apartment features a spacious open plan living area, modern high-end kitchen with fully integrated appliances, stunning bathroom/shower rooms, and generously proportioned bedrooms with fitted wardrobes for your convenience.

The development is situated within close proximity to the Eden shopping centre, less than one mile from High Wycombe station offering transport into London Marylebone in 25 minutes, and two and a half miles to the M40.

- **Brand New Development of 23 Apartments**
- **Luxury Fully Tiled Bathroom**
- **Ultra Fast Fibre Broadband**
- **Two Double Bedrooms**
- **Individually Designed Fully-Fitted Contemporary Kitchens**
- **Video Intercom Entry System**
- **Secure Gated Parking Included**
- **Nearby to Town Centre & Train Station**
- **Opposite Rye Park**
- **Available from April 2026**

**£1,695 Per month**



### Third Floor

Floor Plan produced for Ford & Partners by Media Arcade ©.  
 Illustration for identification purposes only. Window and door openings are approximate. Whilst every attempt is made to assure accuracy in the preparation of this plan, please check all dimensions, shapes and compass bearings before making any decisions reliant upon them.

Energy Efficiency Rating		Current	Potential
Very energy efficient - lower running costs			
(92 plus) <b>A</b>			
(81-91) <b>B</b>			
(69-80) <b>C</b>			
(55-68) <b>D</b>			
(39-54) <b>E</b>			
(21-38) <b>F</b>			
(1-20) <b>G</b>			
Not energy efficient - higher running costs			
<b>England &amp; Wales</b>	EU Directive 2002/91/EC		

Environmental Impact (CO <sub>2</sub> ) Rating		Current	Potential
Very environmentally friendly - lower CO <sub>2</sub> emissions			
(92 plus) <b>A</b>			
(81-91) <b>B</b>			
(69-80) <b>C</b>			
(55-68) <b>D</b>			
(39-54) <b>E</b>			
(21-38) <b>F</b>			
(1-20) <b>G</b>			
Not environmentally friendly - higher CO <sub>2</sub> emissions			
<b>England &amp; Wales</b>	EU Directive 2002/91/EC		

